

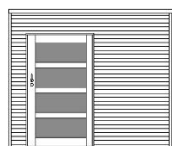


Modern Shed Spruce specifications and price list 2021

-timber	Untreated Spruce (optional colour treatment)
-total height:	229cm (237cm with floor)
-cladding:	Horizontal ribbed or plain cladding
-roof beams:	34mm x 145mm
-doors:	Sliding door 125cm x 200cm with frosted glass
-glazing:	Single glass 4mm
-roofing finish:	EPDM with internal gutter outlet and downpipe
-floor:	19mm x 88mm Tongue & groove floor

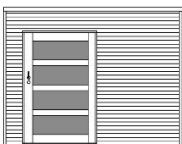


Modern Shed Spruce



Width	Depth	Price	Timber floor	Paint or Stain Finish	Deck base foundation	Assembly
300 cm	200 cm	£4,588	£226	£973	£810	£770
300 cm	250 cm	£5,062	£282	£1,047	£1,013	£850
300 cm	300 cm	£5,535	£338	£1,120	£1,215	£895

Other sizes available upon request



Width	Depth	Price	Timber floor	Paint or Stain Finish	Deck base foundation	Assembly
350 cm	200 cm	£5,007	£263	£1,047	£945	£810
350 cm	250 cm	£5,508	£329	£1,120	£1,181	£895
350 cm	300 cm	£6,009	£395	£1,194	£1,418	£975

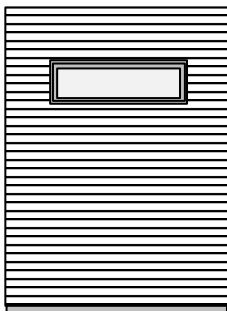
Other sizes available upon request



Width	Depth	Price	Timber floor	Paint or Stain Finish	Deck base foundation	Assembly
400 cm	200 cm	£5,426	£301	£1,120	£1,080	£850
400 cm	250 cm	£5,954	£376	£1,194	£1,350	£935
400 cm	300 cm	£6,483	£451	£1,268	£1,620	£985

Other sizes available upon request

Additional options



Plain non-ribbed horizontal cladding no additional charge

Bottom hinged window 125cm x 40cm single glazed frosted glass unpainted £198

Bottom hinged window 125cm x 40cm single glazed frosted glass painted £298

Delivery

Delivery costs are included in the price but are dependent upon access and location.

Assembly costs

For installations 50-75miles from BA14 ODT please add 20%

For installations 75 - 100miles from BA14 ODT please add 30%

For installation over 100miles/London P.O.A