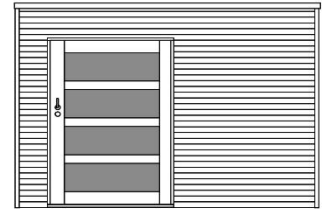


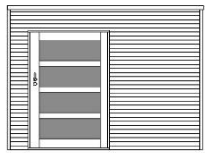


Modern Shed specifications and price list 2021

-timber	Untreated Cedar (optional colour treatment)
-total height:	229cm
-cladding:	Plain cladding
-roof beams:	34mm x 145mm
-doors:	Sliding door 84cm x 200cm with frosted glass
-glazing:	Single glass 4mm
-roofing finish:	EPDM with internal gutter outlet and downpipe
-floor:	21mm x 88mm Tongue & groove floor



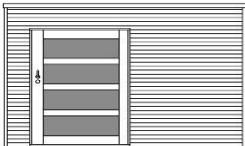
Modern BOX



Width	Depth	Price	Timber floor	Paint or Stain Finish	Deck base foundation	Assembly
300 cm	200 cm	£6,670	£282	£736	£720	£770
300 cm	250 cm	£7,420	£352	£810	£900	£850
300 cm	300 cm	£8,170	£423	£884	£1,080	£895

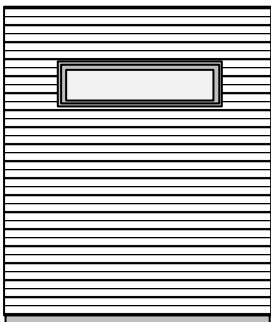


Width	Depth	Price	Timber floor	Paint or Stain Finish	Deck base foundation	Assembly
350 cm	200 cm	£7,355	£329	£810	£840	£810
350 cm	250 cm	£8,140	£411	£884	£1,050	£895
350 cm	300 cm	£8,925	£493	£957	£1,260	£975



Width	Depth	Price	Timber floor	Paint or Stain Finish	Deck base foundation	Assembly
400 cm	200 cm	£8,045	£376	£884	£960	£850
400 cm	250 cm	£8,560	£470	£957	£1,200	£935
400 cm	300 cm	£9,675	£564	£1,031	£1,440	£985

Additional options



Plain non-ribbed horizontal cladding no additional charge

Bottom hinged window 125cm x 40cm single glazed frosted glass £229

Delivery

Delivery costs are included in the price but are dependent upon access and location.

Assembly costs

For installations 50-75miles from BA14 ODT please add 20%

For installations 75 - 100miles from BA14 ODT please add 30%

For installation over 100miles/London P.O.A